



KITCHEN CABINET

The Largest Cabinetry Manufacturer in Asia



Welcome!

Please take a minute to learn more about Oppein:

■ We commit to service.

Service is always what we consider as priority, and professional design, sales and production team make us qualified to offer the second to none service.

■ We commit to quality.

Quality is our cornerstone, and it makes us go further stably. What you care the most is what we focus.

■ We commit to development.

Let me walk you through this catalogue, and you'll find the brand new kitchen cabinets. We always catch up with the latest designs and materials, because we believe that only development could bring our customers what they love.



Contents

Kitchen Cabinet Introduction	01-86
■ Modern Style Kitchen Cabinet	01-62
■ Transitional Style Kitchen Cabinet	63-72
■ Traditional Style Kitchen Cabinet	73-86
Information on Door Interior	87
Information on Door Fronts	88
Available Color of Door	89-90

Kitchen Cabinet Introduction

-- Customized for you!





Modern

LAFITE

PLCC17060

Combing with the stainless countertop with the tempered glass, this kitchen cabinet is the shinning star.

The 4 standing pantries is enough for storage. The tempered glass door is high temperature resistant, and it's very safe in material.

As to the surface of the wall cabinet, it has the lacquer texture when touching it, and the open cabinets below the wall cabinet set a mood of light-hearted

The stainless countertop is very easy to clean and care.

3 main characteristic of this unit:

- The reasonable lay-out.
- The ergonomics and humanized design.
- The kitchen work triangle.



SAIPAN High Gloss

OP12-L062

The island of this gorgeous kitchen mimics ship shape and brings unforgettable visual impact. The hue mix of white and red is a deliberate decision that balances coolness and warmth. The state-of-the-art high glossy fronts and clean lines define its modern conciseness and elegance. Not to mention, there are lots of intelligent accessories hidden which give pleasurable operation benefits.

SANTORINI High Gloss

OP12-X101

A thick and molded solid surface makes for an impressive appearance. This white sleek countertop mimics the aircraft carrier deck. It teases the eye and reveals its toughness. The countertop also hosts a four-burner cooktop which is enough for a social gathering. The white high glossy fronts, adorned with long brushed handles, resemble lateen sails in ocean and follow through the theme thoughtfully.





FOTONGO

OP16-PVC02

This all-island kitchen seems to be a contemporary movement. Maybe that's because it frees up wall space, allowing for more open flow between rooms and for more large windows at exterior walls. It is nearly 15 feet long, giving you plenty of room to cook and entertain.

VANDELA

OP16-L18

The kitchen has clearly become the most important part in the house, so the design focus on lifestyle and enjoyment. Yes, the space is about cooking, but it is also about atmosphere, socializing, beautiful and functional design.

The lines are being blurred between the kitchen and living space as larger multi-purpose rooms are being created. Combining the kitchen and lounge result in fluid transition between the spaces.





LIVEITAN

OP16-L19



It is a gloss lacquered handle-free kitchen. Black framed glass doors create mysterious atmosphere. Adding a breakfast bar introduces a warm contrast to the slim quartz worktop.

The countertop is just 12mm thick, giving the impression that it floats above the units beneath. But make no mistake, it's strong enough to support all your heaviest pans and stand up to a lifetime's use.

PANTOM High Gloss

OP16-L22

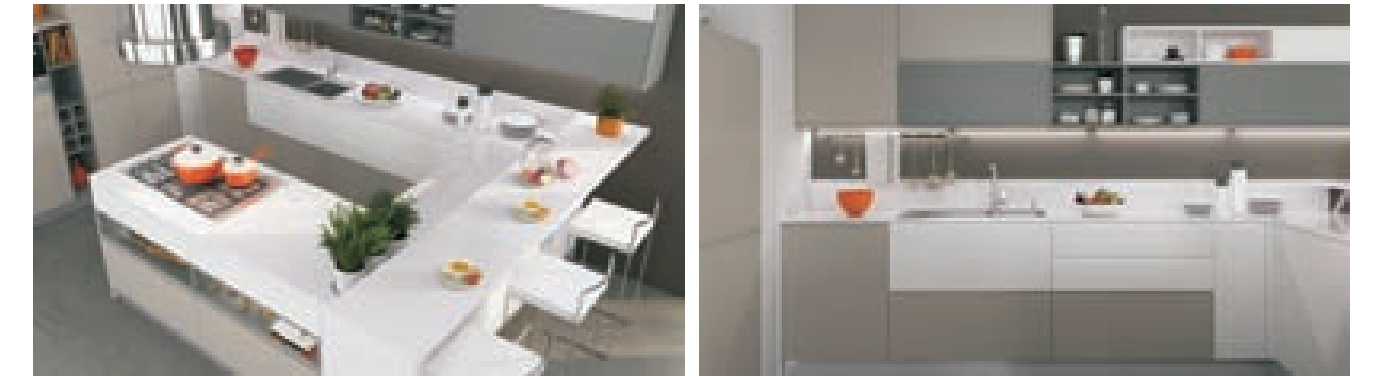
It's not often that you see a kitchen island made of natural sintered surface. So it is a welcome change. It allows accurate manufacturing and results in seamless appearance.



Humanization Design

As you can see, besides its stunning appearance, the function of the island is also impressive. The extending U-shape bar gives you more dining space.





COLIN High Gloss

OP16-ML05

"You cook, you serve".

The cooking area and the dining area are integrated together to create a more enjoyable time.

The open wall cabinets are another eye catch which provide open and enough space for your favorite collections, and them serve as decorations for your kitchen.

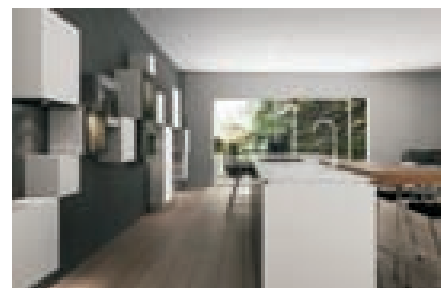
The grey color cabinet door material goes well with the rangehood, and brings a post-industrial element, which makes your cooking efficient and convenient. Cooking in such an atmosphere, you would have everything under control.



SAN CAMINO

OP16-L21

This contemporary kitchen will please any city dweller with its sleek appearance. Use of a pure white color scheme and LED cabinet makes this kitchen look more like science-fiction than reality.





BOLADO

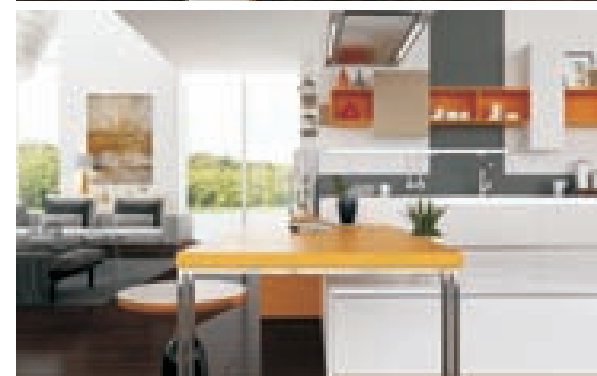
OP16-PVC03

Today's Kitchens Are All About The Kitchen Experience.

The kitchen has clearly become the most important room in the home, so the design focus is on lifestyle and enjoyment. Yes, the space is about cooking but it is also about atmosphere, socializing, and beautiful, functional design.

Modern White PVC and Orange Melamine Kitchen Cabinet

The dining table matches the cabinetry and the island perfectly. Knee space is retained for diner, making the entire length of the countertop usable. This is also a good way to visually lighten the size of a big table area.



The high cabinet features a strong vertical shadow line that underpins the linear nature of the design.





FORITZ

OP16-SIN01

The natural sintered surface opens surprising dimensions in design, quality and sustainability. It allows accurate manufacturing and results in seamless appearance. The 3mm thick sintered surface is highly resistant, easy to clean, recyclable and heat-resistant. Matte gray lacquer display cabinets add rich elements for the kitchen, so it won't appear too hidebound.





SALONGA Laminate

OP14-M06



This modern kitchen has very clean outline. To follow the theme of simplicity, we use hidden bar handles for all units. We use cream laminate for all wall units. For the base units, we use light grain melamine. The floor is further darker than base units. The whole color difference from top to bottom escalates increasingly.

By the way, we design open shelves in the island for handy storage. It is also another consideration to bring some exposed visual interests.



MODERN DOMINGA

OP16-PVC01

This modern kitchen gets a bit of Japanese flair from the simple wooden cabinet that we see pictured here. The cabinets are simple and sparse. Wood forms the basis of the Zen-like feeling design. Simple, elegant and totally modern. If only the dishes inside were inspired by Japanese design - it would be perfect!





• GETARIA Acrylic

OP15-A01

Elegant and Functional at the Same Time

the new kitchen range in high gloss yellow. Combined with black acrylic open cabinet, it creates a fascinating color feature what is very impressive, but also with the attention to detail.

Simplify your life, and fills your kitchen with the scent of simple elements.



The design combines the wall cabinet with the base cabinet together to create a integrated space.

The built-in wall cabinet is a functional place for storage.



SCOTT'S

OP16-L17

A good example of beautiful function. Most of us think of open shelving as being against a wall, but this shelving system adds storage in a normally blank space. Adding this kind of shelving automatically gives you much more kitchen storage space without obstructing the view.

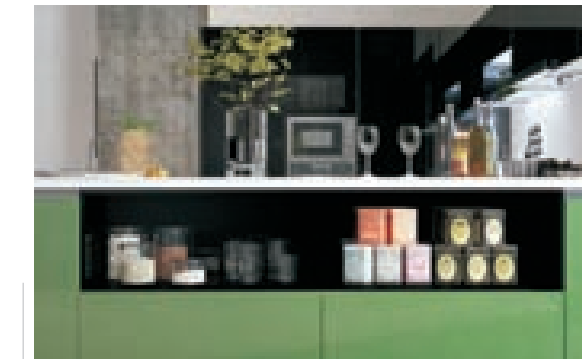




RAGLAN Flash Lacquer

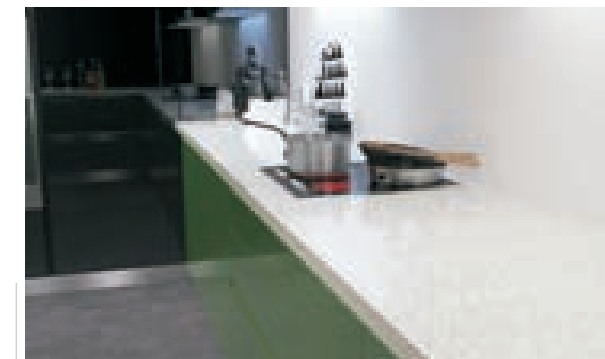
OP15-L11

Combination of black and green creates an impact of vision. Semi-open kitchen layout makes it easy to communicate with other people for person in cooking. Imaging that when you are cooking, your children playing around and talking with you. How funny it is!



• Color Coordinated

Open undercounter cabinet provides both storage and design opportunities, as this neatly arranged collection of ingredient shows.



• Ample Working Space

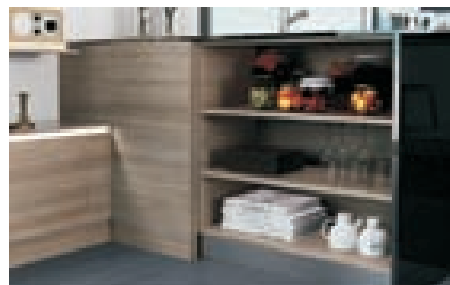
Long countertop ensures that you have enough space to put prepared vegetables, meat, spices or cooked food.



LAMINGO

OP16-M05

The lines are being blurred between the kitchen and living space as larger multi-purpose rooms are being created. Combining the kitchen and lounge areas resulted in a fluid transition between the spaces.





CORVETTE High Gloss

OP15-036

Metallic golden and grey display a neutral combination, which makes this high glossy surface comes with sober sense. The sharp white and grey countertop accentuates the sober theme as well. Blue LED strips not only adds extra lighting, but also reveals its modern sentiment again.

The curved doors, however, soften this atmosphere and serve a pleasant visual balance deliberately. Open cabinets are another eye catch which provide open and enough space for your favorite collections.



WANAKA Maple

OP15-S14

The whole kitchen is almost in white and it gives a feeling of tidiness. Matching with the wood grain series, such as the long table and the door, the whole kitchen presents a natural style, which is popular with people in Indonesia area.



Beautiful in Design

Electronic appliances could be inserted in these functional cabinets, which could save a lot of space and make the kitchen look tidy. Besides, the countertop could provide a place for hot dishes putting.



Visual Interest

By putting some special items, such as distinctive crafts, beautiful dishes in the open cabinet, people may feel like wandering at a show. It is a good way to decorate your home.



ABERDOUR High Gloss

OP15-L07

From its color-scheme to its geometry, this kitchen is right up with the times. Its combined table-and-island makes it a perfect link between living and cooking areas. Walnut finish and red carcass highlight in gray lacquer which interact to produce a highly amenable atmosphere. This kitchen isn't just for cooking – it's for living.



Various Storage

Open shelves against wall cabinet provide more storage for you. Also, it is convenient for you to take frequently-used objects from the shelves. Cherry wood grain melamine combine with white lacquer, which creates a composed color feature - not only impresses with the feel of the material, but also with the attention to detail.



POZZOLANA Sintered Surface & Acrylic

OP14-068



Since it's natural texture and easy to achieve stately visual effect, rock surface becomes a popular trend in super-modern kitchen design. It is specially suitable for a spacious room and matches ceramics floors and walls. The brown sintered surface comes from SPAIN, one of the leading rock surface manufacturers in the world. Besides its visual benefits, sinter surface is also the most heat-resistant door material.

We use white sleek acrylic fronts as all built-in fronts, with the aim to exhibit a dynamic balance and create a satisfying tension in the room.

As a whole, this kitchen shows its reasonable strengths with its island, but it is not overwhelming because of the use of white acrylic.

LORRAINE

High Gloss Melamine

OP13-248

This fascinating kitchen defines that even in a narrow space, we can also create a work of art. The secret is the use of geometry. Firstly it is the extended bar countertop which create a cozy dinner area. The bar leg is the key, because we follow the use of white solid leg, instead of stainless steel or other material.

Underneath the range hood, the countertop bulge breaks one-wall shaped dullness. Meanwhile, The shelf and opening cabinets exhibit a fluid beauty in a high level. Kitchen fronts is the mix of high glossy oak and white melamine, stunning and very easy to care.





OUALATA

High Gloss Flash Lacquer

OP12-L054

The lemon green is really an eye relaxation when you enter this kitchen. It is spread from base units, thick countertop to open shelves and wall panels. The thick lapping green countertop create a small preparation and dinner area. Irregular black wall units increase geometry charms and add mystery. White pantry cabinets are symmetrical and can meet storage purpose effectively. As a whole, this kitchen implies a peaceful pace of life.



TIROL High Gloss Veneer

OP13-285

A kitchen island can be many things, cooking area, dining area, preparation area etc. This white island countertop catches eyes with its extra thickness and arch leg.

Base fronts are veneered, which presents unsurpassed high gloss visual impact and very easy to care. The design of white wall units are deliberate. They can be associated with airplane luggage cabin. Handle-free doors enhance the conciseness.

PAMPAS

High Gloss Acrylic

OP13-076

With its hidden handles, this modern kitchen looks cute and clutter-free. The high glossy arc fronts present its tender beauty and state of the art crafts. The countertop echoes the same olive green with base units. To break the monochrome, we use the versatile black to accentuate the whole hue. The door fronts are acrylic. It is another choice to achieve high gloss surface, and it is more scratch resistant.





IONIAN High Gloss

OP13-294



The mix of high glossy blue and white is the hint of ocean. White pantry units brighten the whole space. However, blue open cabinets add storage convenience and compensate the possible visual dullness. All doors are handle-free, plus with the hidden built-in range hood, which greatly follow the theme of modern simplicity. This clean and bright kitchen will more or less give a delightful mood of cooking and dinning.

PANDORA
High Gloss Acrylic
OP15-011

The combination of white and gray acrylic looks simple. Adding yellow open cabinets, this kitchen cabinet appears much more beautiful. Life is ordinary, but always has sweet surprise.





TAYLOR Flash lacquer

OP16-117

Composure and functionality with its geometry & intelligent accessories

Taylor is clean and minimalist, with the combination of white flash lacquer door panels, black worktop and splash wall, handle-free design.

The kitchen gets its inspiration from diamond, mainly for the convex range hood and the beveled worktop, which represents OPPEIN unceasing pursuit for design and technical innovation.

The layout of back cabinets and islands features symmetry accurately, creating a mood of balance and composure.

Taylor also features its intelligent and ergonomical accessories. The right and left pantry pull outs provide enough storage space. The hanging pull-down system allows easy access and operation.



L Shaped



STUTTGART One Wall & Island High Gloss Veneer

OP15-057

The kitchen in dark wood grain color and beige presents a modern and elegant look. The layout of the kitchen cabinets appears symmetrical. With the pentagon high cabinets on both sides, the whole kitchen looks unique and attractive. What's more, the trapezoid design of the island makes this kitchen a high-end level.





KLERX L-shaped Laminate

OP15-024

From its colors to its style, this kitchen cabinet is right up with the times. Shining dark wood grain match with pure white. Like coffee and milk. So harmonious.

One Wall





ROSTFREIER

OP17-S30

Stainless material is a new trend for kitchen cabinet. The door, the carcass and the countertop are stainless.

Made from stainless, which makes this kitchen cabinet easy to clean, and lights up the atmosphere in the kitchen.



People might think that the stainless kitchen cabinet is not suitable for household use, it should be more suitable for restaurants.

But what we show you is perfect for your own kitchen, because designers make it more homely from the appearance and design.



Transitional

KARL BAGGIO

PLCC17058

For this kitchen cabinet, the PVC finish for the door is imported from Japan. The sink and the stove are imported from Italy.

The alloy frame glass door is one of the highlights for the whole unit.

As for the lacquer finish open cabinet on both sides, they are 45° joint on the corner.





CABERNERA

PLCC17059

With the cool color tone, this unit shows the plain feeling.

The wall unit door is made from matt glass, so you can find out what you need easily.

The glass shelves above the island is another design highlight, the space is used effectively.

The sliding door is with aluminum frame, and behind the door is large storage space. All the kitchen wares can be stored in it.

It's like a huge base cabinet with drawers and shelves in it.





VALINER

OP14-106

The white finish for the cabinets and the white countertop represent a feeling of tidiness.

The one wall shape kitchen cabinet, plus the island is convenient for the cooking, and the open units at the island is easy to reach.



NISHE

OP16-L06

The semitransparent glass doors add the mysterious mood to this whole unit.



- This kitchen cabinet is large in square. There are 3 sections in total.
- The cooking area, the fridge area and the island area.

The kitchen is not just a place where you cook, but also a place for socializing, and this kitchen cabinet meets both of the purposes.



- Comparing with the traditional style, the transitional style is not complicated in appearance but with elements of both traditional and modern.

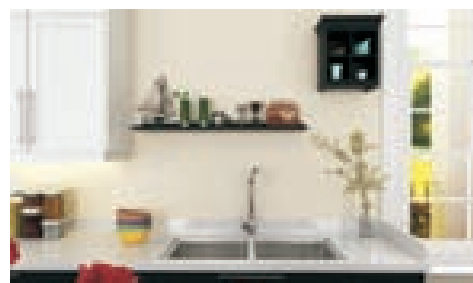




SHEFFIELD Matt

OP15-L14

Smart Working Place
Small table next to the island make preparing food become more easy. And it combines with the island harmoniously.





Traditional



* The dinning table is near the window, so you can enjoy the beautiful scenery outside while you're enjoying your cuisine.

* On the other side, there are also enough space for storage.



FRAGE

OP16-PP04

The One Wall kitchen cabinet is a symbol of simplicity. For the wall unit, we use matt lacquer, and for the base cabinet, we use melamine.

The open shelves at the both sides of the wall cabinet are easy to reach, and you can place kitchen wares that are frequently-used.



LAVA

OP16-PP03

Small but organized, with PP door and granite countertop, this kitchen cabinet gives you enough space for cooking. You don't need to worry about the space.

The symmetrical design is a symbol of aesthetics.





BOLGHERI Thermofoil

OP13-257



Depending on grains and door patterns, PVC with MDF substrate can be used to reflect traditional or transitional style.

Contrast to a traditional kitchen, this cottage style kitchen has uncomplicated crown molding and range hood cover, no extra carvings. Bronze pulls add a traditional hint. The black backsplash aims to dissolve whiteness. The very important is the frosted wall units, which enhance some transparency. Meanwhile, inside the wall units, built-in lamps can add extra illumination and bring atmosphere at night.

HOKITIKA Matt

OP15-L19

This kitchen is almost in white which maintain its elegance. And the wood floor evokes a comfortable style. Besides, with a single-wall layout and an island in the middle, this kitchen leaves an impression of great space. With all these decorations, cookers may feel at ease in this kitchen.



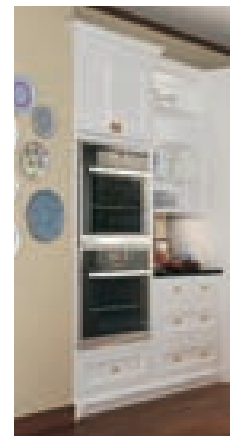
Visual Interest

This functional high cabinet contains two cabinets for electronic appliances, which could save lots of space.



Spacious countertop

This long single-wall countertop provides cookers a place to put some dishes when they finish washing. Also they can put vegetables for cooking here.



Beautiful in design

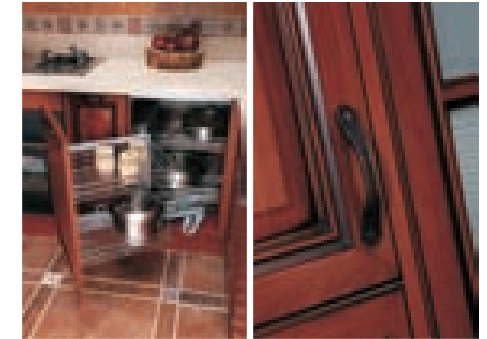
Besides, it looks very beautiful and gives a feeling of tidy.





NICEA Thermofoil Wrap

OP14-035



It is material breakthrough. At the first sight of this kitchen, you may think it is solid wood kitchen, but it is not. The door fronts and moldings are wrapped by a highly natural thermo foil-PP. This special PP can also be distressed and painted, achieving state of the art aging effect. Besides, we add other traditional elements, such as woven doors, opening shelves and bronze handles and curtains, making this kitchen presenting a pleasurable and classical visual interests.

We recommend PP door fronts, not only because of its lower cost, but also PP has many other benefits that solid wood does not have. To maintain its natural luster, you need to wax your natural door fronts regularly. However, PP door fronts do not require any extra maintenance, and it is more scratch and heat resistant than solid wood. By the way, as a substitute of solid wood, PP is a more eco-friendly material. If you want to reduce your footprints but get a traditional looks, PP is one of the best choice.



DUKE Walk-in



VINTAGE

OP16-120B

The traditional style brings the kitchen a scent of home, thinking of how happy and warm the scene would be when families get together.

Life is not easy, but a home could brings us relaxation and warmth.





PRESCOTT
Red Oak
OP12-L012



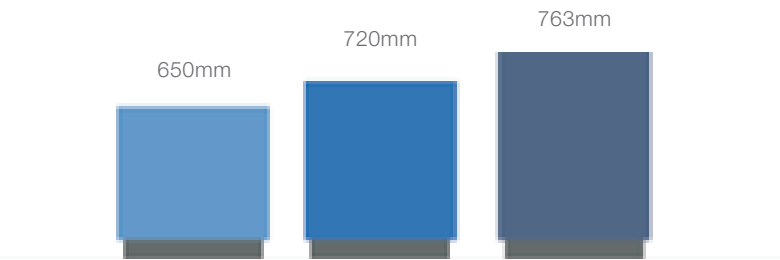
Exquisite detailing is a sign of luxury. The handcrafted corbels, the star carving of the range hood, rope moldings and complicated base posts, all represent our state of the art crafts.

The fine raised red oak fronts are carefully stained and come into a sense of warmth and comfort. The big tiered stunning worktop can serve as a happy family dinner or a pleasant social gathering. Its black color allows a sense of gravitas. Also, the transparent wall units are the timeless design for a traditional kitchen.

Oppein Excellent Customization

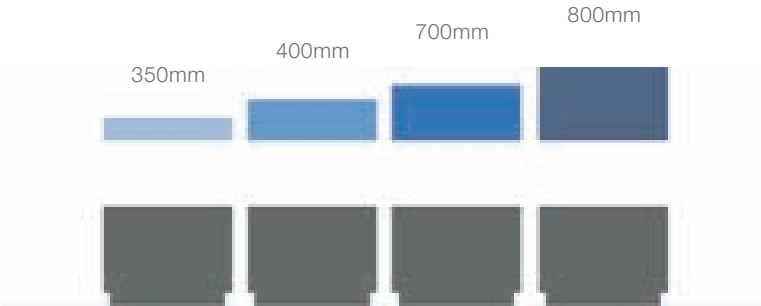
■ Base cabinet

Different heights of base cabinet, choose the one that you need.



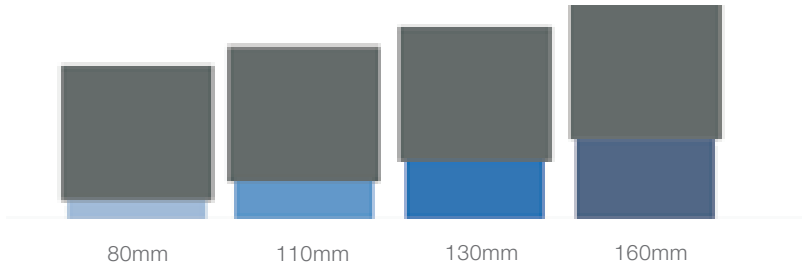
■ Wall cabinet

Different heights of wall cabinet, getting what you want easily.



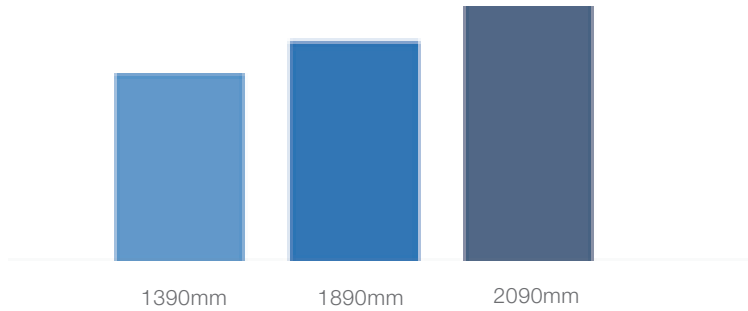
■ Toe-kick

Different heights for the toe-kick, all for your convenience.



■ Pantry

Different heights for pantry, providing enough storage space.



Inside the Door Panel

■ The Interior of Laminate Finish Door
— Particle Board Base

Note: MDF is Medium Density Fiber



■ The Interior of Lacquer Finish Door
— MDF Base



■ The Interior of Melamine Finish Door
— Particle Board Base



■ The Interior of PVC Finish Door
—MDF Base



■ The Interior of Acrylic Finish Door
—Plywood Base

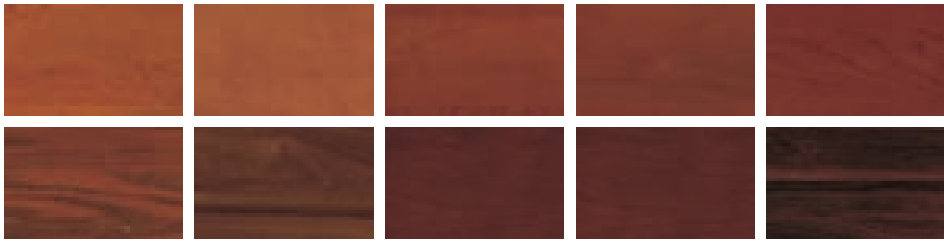


■ The Interior of Wood Veneer Door
—MDF Base



Door Fronts

Natural--Solid Wood



Solid wood kitchen is timeless. It has the natural beauty of wood coming from its grain, pattern and color. Each tree is unique and its growth is affected by its soil type and environment. No piece of wood is identical to another. Solid wood kitchen is not only for cooking ,but also an asset that reflects users’ dignity .

OPPEIN can offer different wood species, such as birch, cherry wood, walnut, red oak, alder, maple, and ash for your choice.

Solid wood kitchen has the following advantages:

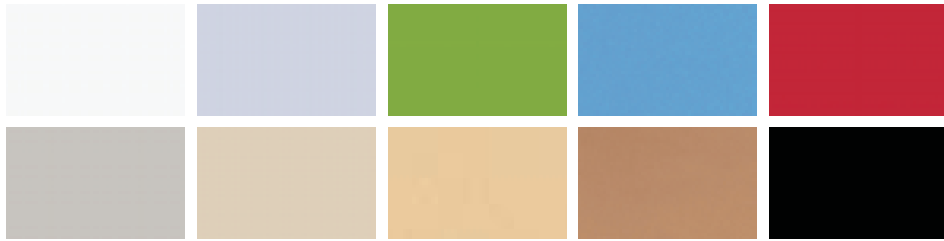
- Timeless appearance
- A lot of warmth to your home
- Luxury and elegance

Natural--Wood Veneer



- Choose high quality natural wood veneer and hot pressed, retaining natural grade
- Waterproof, distortion and swell resistance, rupture resistance, outstanding sound insulation performance
- Edges banded by wood veneer

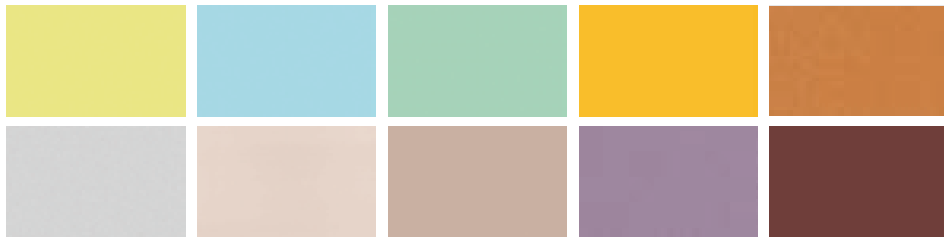
High Gloss – Lacquer & UV Lacquer



The clean lines and contemporary styling of a high gloss finish create a bold statement in any kitchen. Its sheen can serve many different design functions. High gloss can create emphatic contrast, particularly when used with surfaces that reflect nature, like the dark, textured wood grains that are also waxing in popularity. A color trend that is increasing in popularity involves using high gloss for accent colors that really pop. But high-gloss can also be reductive. Take the white high-gloss kitchen for example. It is a perennial favorite for its sleek, clean, modern sensibility. High gloss kitchen has advantages as below:

- Colorful
- Even coloration
- Sustainable luster
- Easy to clean

Gloss – Sleek Acrylic



Acrylic is a polymer created when giant carbon molecules combine chemically. Finished acrylic sheet exhibits glass-like qualities – clarity, brilliance, transparency, translucence. It can be tinted or colored, mirrored or made opaque. A number of coatings can be applied to a sheet or finished part for performance enhancing characteristics such as scratch resistance, anti-fogging, glare reduction and solar reflective.

- Glossy
- Alternative to replace lacquer
- Scratch resistant
- Easy to clean
- UV light and moisture resistance

Door Fronts

Wood Grain-Thermofoil



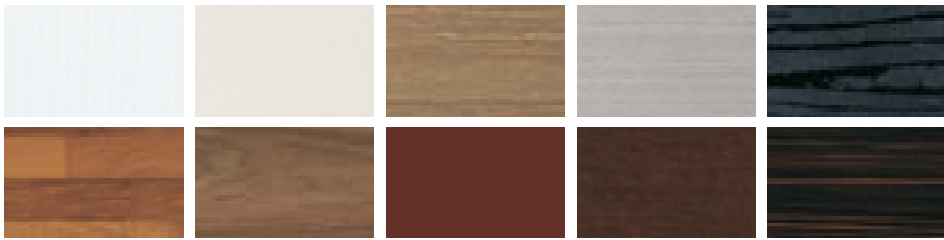
Thermofoil (also called PVC or polymer), laminate and melamine can be printed with beautiful natural wood grain. To compare, PVC door is more likely to achieve traditional or transitional style, because PVC has MDF as substrate, and MDF can be molded into raised or recessed door pattern. Meanwhile, PVC is thicker than laminate and melamine and has better scratch resistance.

However, laminate or melamine has particle board as substrate. Particle board is flat and can not be molded and it lacks change in door shape. As to laminate and melamine, laminate is thicker and harder than melamine.

Thermofoil, laminate and melamine has below advantages:

- Waterproof
- Realistic wood imitation
- Easy to clean
- Invariable and even colors
- Heat & scratch resistance
- High gloss or matt visual interest

Textured-Laminate & Melamine



Laminate and melamine has been the most widely used material as kitchen and furniture surface. Many people may consider laminate and melamine is low end. However they have been phenomenal in the last couple of years to give back to their lost value as an interesting product. Indeed, melamine has undergone a major facelift. Not only the amount of new finishes has increased considerably but the colors were also updated, thus meeting the requirements of a modern client.

Laminate and melamine has below advantages:

- Wear resistance
- Waterproof
- Heat resistance
- 3D texture available

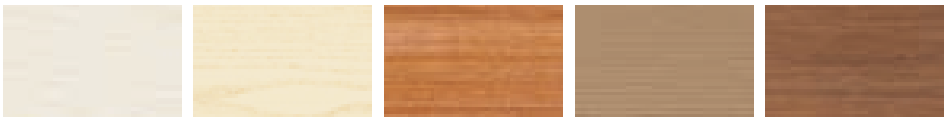
Matte-Lacquer



Matte Finish is coming from Japan Daiho Piano-level eco-friendly lacquer,surface is elegant and charming and antioxidant,composed of 3 layers of primer and 2 layers of top coat, surface hardness is 1.8.

- Good moistureproof
- Antioxidant
- Adhesiveness performance
- Never discoloring

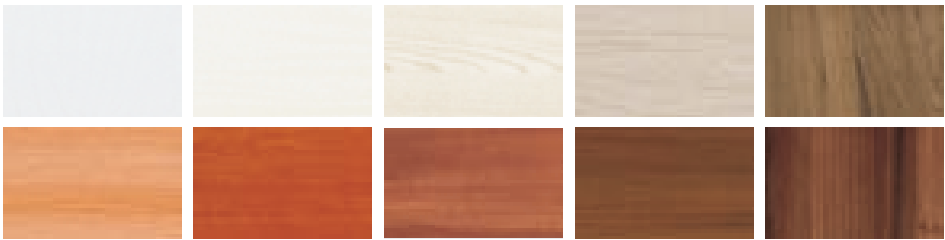
Natural—PP



Wrapped PP is the material breakthrough recently, and it is seen as the alternative of solid wood. With the advanced printing technology, this thinner material not only has unparalleled natural wood grain and luster, but also can be wrapped perfectly to hide its substrate MDF due to its flexibility that other thermo foils do not have. Besides its natural beauty same as solid wood, PP also has some benefits that solid wood does not have:

- Reducing deforestation, more environmental friendly
- Less care and maintenance than solid wood
- More scratch and impact resistance than solid wood
- More heat resistance than solid wood
- More waterproof than solid wood

Natural—PVC



PVC door is more likely to achieve traditional or transitional style, because PVC has got MDF as base, and MDF can be molded into raised or recessed door pattern.

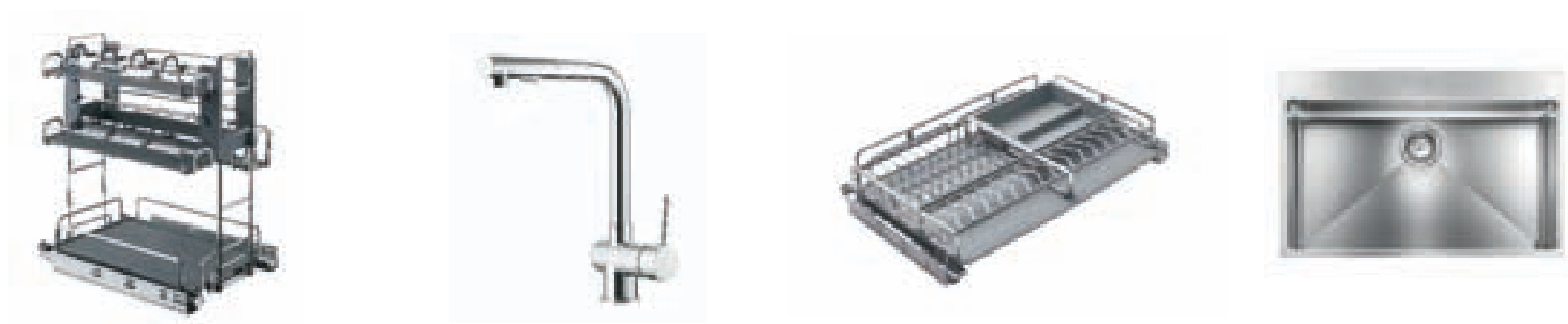
Other Kitchen Elements

For more literatures, please visit www.oppeinhome.com to download.

- Kitchen Designer Manual
It includes all information about our door styles & finishes, countertop, carcass, hardware& fittings, and modules.



- Kitchen Accessories
It includes pull-out baskets, sinks, faucets, drawer dividers, cabinet lights and with bins.



Other Kitchen Elements

For more literatures, please visit www.oppeinhome.com to download.

- Kitchen Appliances
It includes various electrical appliances.



- Kitchenware
It includes kitchen ware such as pans, knives and other kitchenware.

